

Case Study

Industrial Energy Efficiency

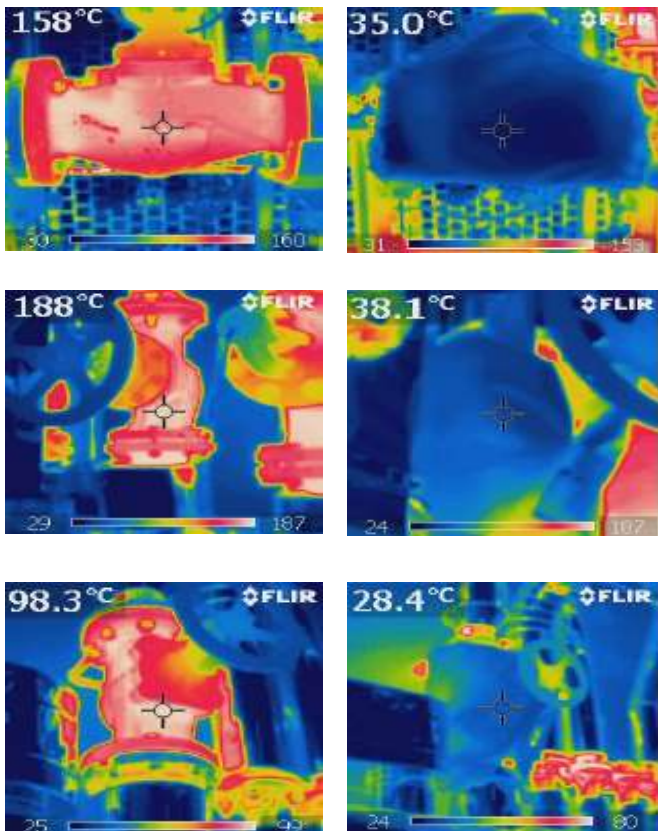


Sector:	<input checked="" type="checkbox"/> Industry	<input type="checkbox"/> Large Buildings	<input type="checkbox"/> Infraestruturas	<input type="checkbox"/> Small buildings / residential
Subsector:	Tabaco			Year: 2012
Client:	Phillip Morris International			Implementation (months): 2
Location:	Sintra - Portugal			Performance Contract (years): N/A
Type of Contract:	Custom fabrication and installation, of 387 thermal insulation jackets, for components of the steam system			

Project description:

A detailed take-off was done on site by EWEN technicians, of uninsulated components of the steam system, including valves, filters, steam traps, expansion joints, as well as short piping sections ranging in diameter from DN25 to DN100mm. Based on that take-off, 387 custom-made thermal insulation jackets were manufactured by EWEN, with interior and exterior lining in silicone impregnated fiberglass fabric, and 25mm thick, 128kg/m³ ceramic insulation matt on the inside.

Apart from the piping components, a total of 187 linear meters of pipe (diametres DN25 to Dn100mm) were also insulated with similar insulation materials.



Project results:

In this type of projects, with a large number of small interventions, it is not possible to measure the result of individual measures or even groups of measures, since the system (steam network) is affected continuously by many other factors in the plant.

However, the impact on the Natural Gas monthly bill, was clear, contributing to a reduction of around 50.000Eur on the yearly natural gas cost of the plant.